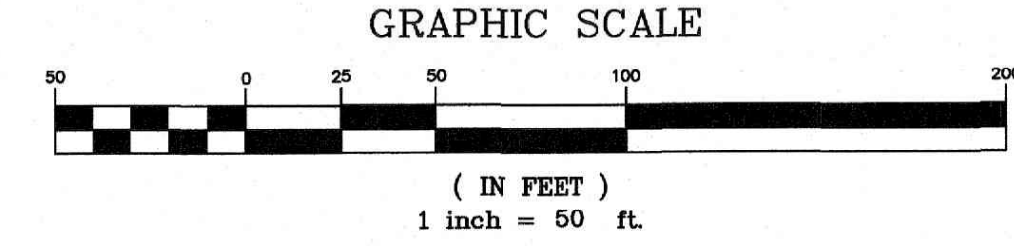
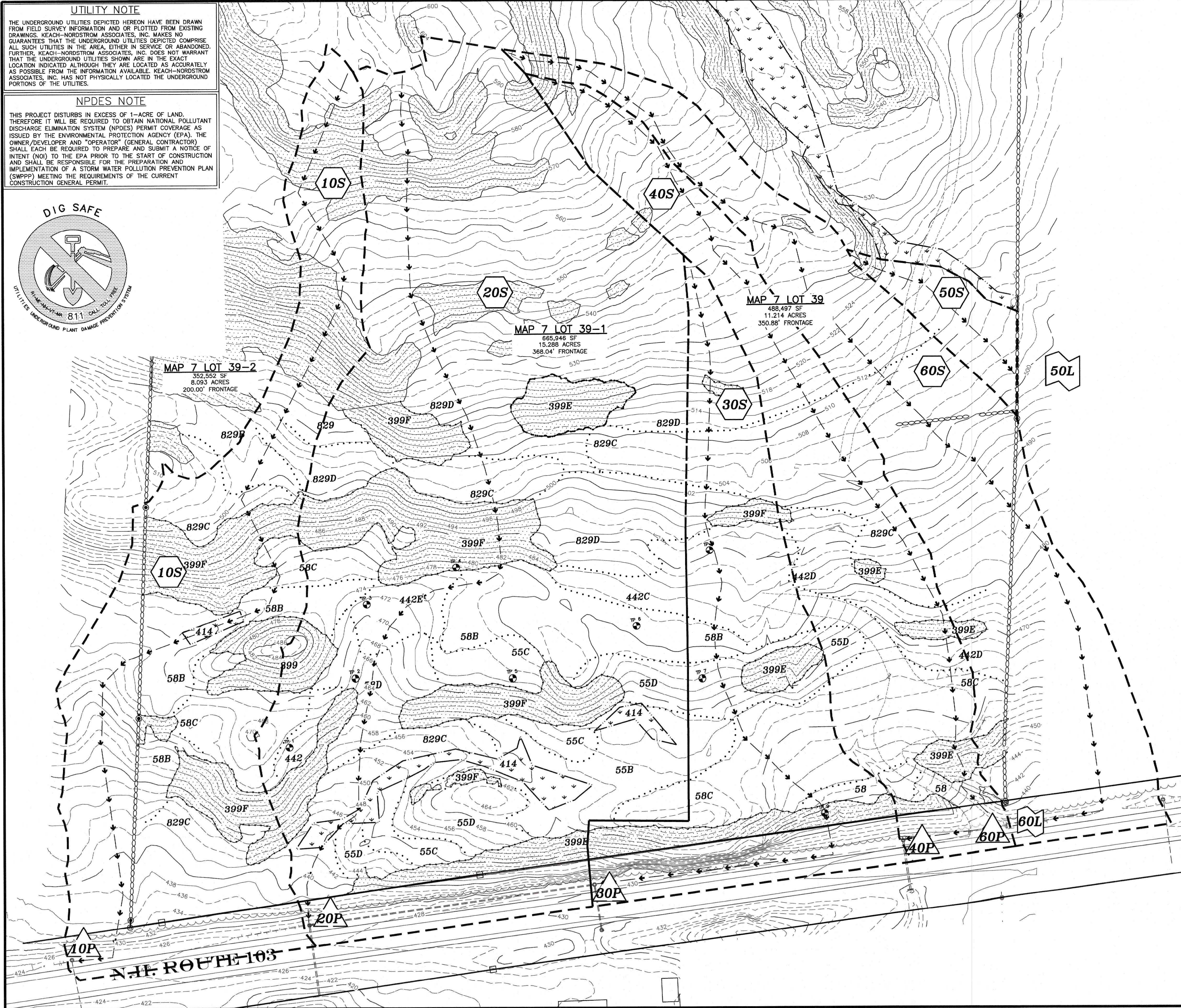


UTILITY NOTE
THE UNDERGROUND UTILITIES DEPICTED HEREON HAVE BEEN DRAWN FROM FIELD SURVEY INFORMATION AND OR PLOTTED FROM EXISTING DRAWINGS. KEACH-NORDSTROM ASSOCIATES, INC. MAKES NO GUARANTEES THAT THE UNDERGROUND UTILITIES DEPICTED COMPRISE ALL SUCH UTILITIES IN THE AREA, EITHER IN SERVICE OR ABANDONED. FURTHER, KEACH-NORDSTROM ASSOCIATES, INC. DOES NOT WARRANT THAT THE UNDERGROUND UTILITIES SHOWN ARE IN THE EXACT LOCATION INDICATED ALTHOUGH THEY ARE LOCATED AS ACCURATELY AS POSSIBLE FROM THE INFORMATION AVAILABLE. KEACH-NORDSTROM ASSOCIATES, INC. HAS NOT PHYSICALLY LOCATED THE UNDERGROUND PORTIONS OF THE UTILITIES.

NPDES NOTE
THIS PROJECT DISTURBS IN EXCESS OF 1-ACRE OF LAND. THEREFORE IT WILL BE REQUIRED TO OBTAIN NATIONAL POLLUTANT DISCHARGE ELIMINATION SYSTEM (NPDES) PERMIT COVERAGE AS ISSUED BY THE ENVIRONMENTAL PROTECTION AGENCY (EPA). THE OWNER/DEVELOPER AND "OPERATOR" (GENERAL CONTRACTOR) SHALL EACH BE REQUIRED TO PREPARE AND SUBMIT A NOTICE OF INTENT (NOI) TO THE EPA PRIOR TO THE START OF CONSTRUCTION AND SHALL BE RESPONSIBLE FOR THE PREPARATION AND IMPLEMENTATION OF A STORM WATER POLLUTION PREVENTION PLAN (SWPPP) MEETING THE REQUIREMENTS OF THE CURRENT CONSTRUCTION GENERAL PERMIT.



- DRAINAGE LEGEND:**
THE LEGEND BELOW REFLECTS THE HYDROCAD MODEL USED FOR DRAINAGE CALCULATIONS.
- SSSM SOIL LINES
 - 30B DENOTES SOIL TYPE
 - P DENOTES POND
 - S DENOTES SUBCATCHMENT AREA
 - R DENOTES REACH
 - L DENOTES POINT OF INTEREST
 - LIMIT OF SUBCATCHMENT AREA
 - TIME OF CONCENTRATION

SITE SPECIFIC SOIL MAP UNIT KEY

SYMBOL	MAP UNIT	HISS SYM	HSG
55	HERMON VERY STONY	121	B
442	CHICHESTER	221	B
58	WALMBEK	321	A
829	WALMBEK-HERMON ASSOCIATION	321	B
414	MOOSILAUKE POORLY DRAINED	521	C
399	LEDGE OUTCROP	228	D

THIS MAP PRODUCT IS WITHIN THE TECHNICAL STANDARDS OF THE NATIONAL COOPERATIVE SOIL SURVEY. IT IS A SPECIAL PURPOSE PRODUCT, INTENDED FOR INFILTRATION REQUIREMENTS BY THE NH DES ALTERATION OF TERRAIN BUREAU. IT WAS PRODUCED BY A PROFESSIONAL SOIL SCIENTIST, AND IS NOT A PRODUCT OF THE USDA NATURAL RESOURCES CONSERVATION SERVICE. THERE IS A REPORT THAT ACCOMPANIES THIS MAP.

THE SITE SPECIFIC SOIL SURVEY (SSSS) WAS PRODUCED NOVEMBER 23, 2024 AND WAS PREPARED BY LUKE HURLEY, CSS # 095, HURLEY ENVIRONMENTAL AND LAND PLANNING, LLC.. SOILS WERE IDENTIFIED WITH THE NEW HAMPSHIRE STATE-WIDE NUMERICAL SOILS LEGEND, USDA NRCS, DURHAM, NH, ISSUE # 10, JANUARY 2011. THE NUMERIC LEGEND WAS AMENDED TO IDENTIFY THE CORRECT SOIL COMPONENTS OF THE COMPLEX.

HYDROLOGIC SOIL GROUP FROM KSAT VALUES FOR NEW HAMPSHIRE SOILS, SOCIETY OF SOIL SCIENTISTS OF NEW ENGLAND, SPECIAL PUBLICATION NO. 5, SEPTEMBER, 2009.

PRE-DEVELOPMENT DRAINAREAS PLAN

JENNESSTOWN MANOR
MAP 7, LOTS 39 & 39-1
ROUTE 103
WARNER, NEW HAMPSHIRE
MERRIMACK COUNTY

OWNER/APPLICANT:
PEACOCK HILL ROAD, LLC
145 OLD TOWN ROAD
WEARE, NH 03281
BK. 3829 PG. 2512

KEACH-NORDSTROM ASSOCIATES, INC.
Civil Engineering Land Surveying Landscape Architecture
10 Commerce Park North, Suite 3B, Bedford, NH 03110 Phone (603) 627-2881

REVISIONS

No.	DATE	DESCRIPTION	BY
1	5/22/25	PER PB AND AOT COMMENTS	AEW
2	9/4/25	PER AOT COMMENTS	AEW
3	10/2/25	PER AOT COMMENTS	AEW
4	10/31/25	PER ARIES & FIRE COMMENTS	JDL
5	11/18/25	PER AOT & COND. OF APPROVAL	JDL
6	12/16/25	PER AOT COMMENTS	AEW

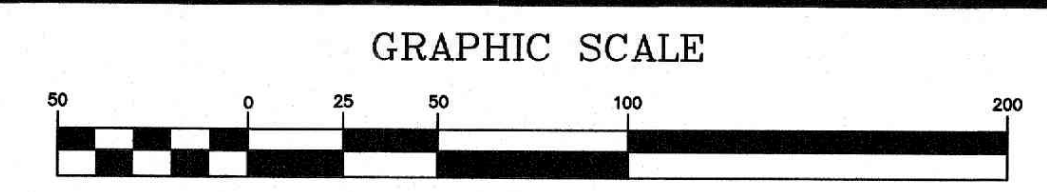
DATE: MARCH 25, 2025 SCALE: 1" = 50'
PROJECT NO: 24-0307-1 SHEET 1 OF 2

UTILITY NOTE

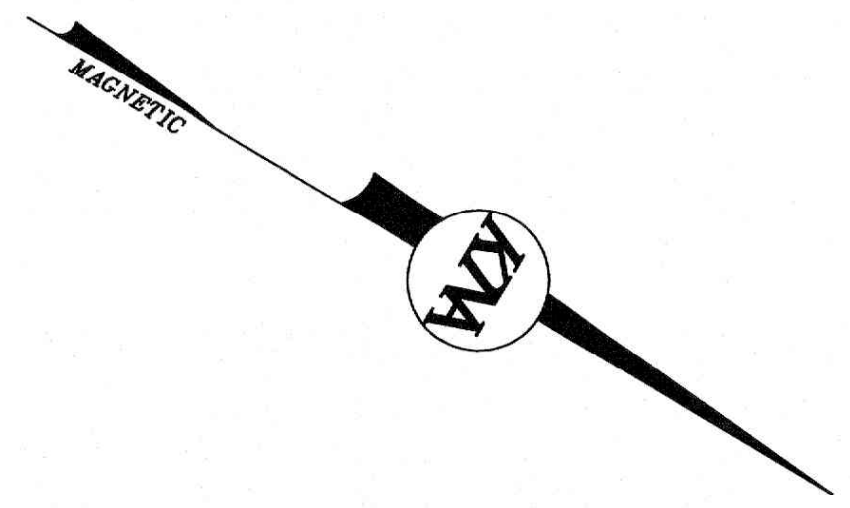
THE UNDERGROUND UTILITIES DEPICTED HEREON HAVE BEEN DRAWN FROM FIELD SURVEY INFORMATION AND OR PLOTTED FROM EXISTING DRAWINGS. KEACH-NORDSTROM ASSOCIATES, INC. MAKES NO GUARANTEES THAT THE UNDERGROUND UTILITIES DEPICTED COMPRISE ALL SUCH UTILITIES IN THE AREA, EITHER IN SERVICE OR ABANDONED. FURTHER, KEACH-NORDSTROM ASSOCIATES, INC. DOES NOT WARRANT THAT THE UNDERGROUND UTILITIES SHOWN ARE IN THE EXACT LOCATION INDICATED ALTHOUGH THEY ARE LOCATED AS ACCURATELY AS POSSIBLE FROM THE INFORMATION AVAILABLE. KEACH-NORDSTROM ASSOCIATES, INC. HAS NOT PHYSICALLY LOCATED THE UNDERGROUND PORTIONS OF THE UTILITIES.

NPDES NOTE

THIS PROJECT DISTURBS IN EXCESS OF 1-ACRE OF LAND. THEREFORE IT WILL BE REQUIRED TO OBTAIN NATIONAL POLLUTANT DISCHARGE ELIMINATION SYSTEM (NPDES) PERMIT COVERAGE AS ISSUED BY THE ENVIRONMENTAL PROTECTION AGENCY (EPA). THE OWNER/DEVELOPER AND "OPERATOR" (GENERAL CONTRACTOR) SHALL EACH BE REQUIRED TO PREPARE AND SUBMIT A NOTICE OF INTENT (NOI) TO THE EPA PRIOR TO THE START OF CONSTRUCTION AND SHALL BE RESPONSIBLE FOR THE PREPARATION AND IMPLEMENTATION OF A STORM WATER POLLUTION PREVENTION PLAN (SWPPP) MEETING THE REQUIREMENTS OF THE CURRENT CONSTRUCTION GENERAL PERMIT.



- DRAINAGE LEGEND:**
- THE LEGEND BELOW REFLECTS THE HYDROCAD MODEL USED FOR DRAINAGE CALCULATIONS.
- SSSM SOIL LINES
 - 30B DENOTES SOIL TYPE
 - P DENOTES POND
 - S DENOTES SUBCATCHMENT AREA
 - R DENOTES REACH
 - L DENOTES POINT OF INTEREST
 - LIMIT OF SUBCATCHMENT AREA
 - - - - - TIME OF CONCENTRATION



SITE SPECIFIC SOIL MAP UNIT KEY

SYMBOL	MAP UNIT	HISS SYM	HSG
55	HERMON VERY STONY	121	B
442	CHICHESTER	221	B
58	WAUMBKE	321	A
829	WAUMBKE-HERMON ASSOCIATION	321	B
414	MOOSILAUKE POORLY DRAINED	521	C
399	LEDGE OUTCROP	228	D

THIS MAP PRODUCT IS WITHIN THE TECHNICAL STANDARDS OF THE NATIONAL COOPERATIVE SOIL SURVEY. IT IS A SPECIAL PURPOSE PRODUCT, INTENDED FOR INFILTRATION REQUIREMENTS BY THE NH DES ALTERATION OF TERRAIN BUREAU. IT WAS PRODUCED BY A PROFESSIONAL SOIL SCIENTIST, AND IS NOT A PRODUCT OF THE USDA NATURAL RESOURCES CONSERVATION SERVICE. THERE IS A REPORT THAT ACCOMPANIES THIS MAP.

THE SITE SPECIFIC SOIL SURVEY (SSSS) WAS PRODUCED NOVEMBER 23, 2024 AND WAS PREPARED BY LUKE HURLEY, CSS # 095, HURLEY ENVIRONMENTAL AND LAND PLANNING, LLC.. SOILS WERE IDENTIFIED WITH THE NEW HAMPSHIRE STATE-WIDE NUMERICAL SOILS LEGEND, USDA NRCS, DURHAM, NH, ISSUE # 10, JANUARY 2011. THE NUMERIC LEGEND WAS AMENDED TO IDENTIFY THE CORRECT SOIL COMPONENTS OF THE COMPLEX.

HYDROLOGIC SOIL GROUP FROM KSTAT VALUES FOR NEW HAMPSHIRE SOILS, SOCIETY OF SOIL SCIENTISTS OF NEW ENGLAND, SPECIAL PUBLICATION NO. 5, SEPTEMBER, 2009.

POST-DEVELOPMENT DRAINAREAS PLAN

JENNESSTOWN MANOR
MAP 7, LOTS 39 & 39-1
ROUTE 103
WARNER, NEW HAMPSHIRE
MERRIMACK COUNTY

OWNER/APPLICANT:
PEACOCK HILL ROAD, LLC
145 OLD TOWN ROAD
WEARE, NH 03281
BK. 3829 PG. 2512

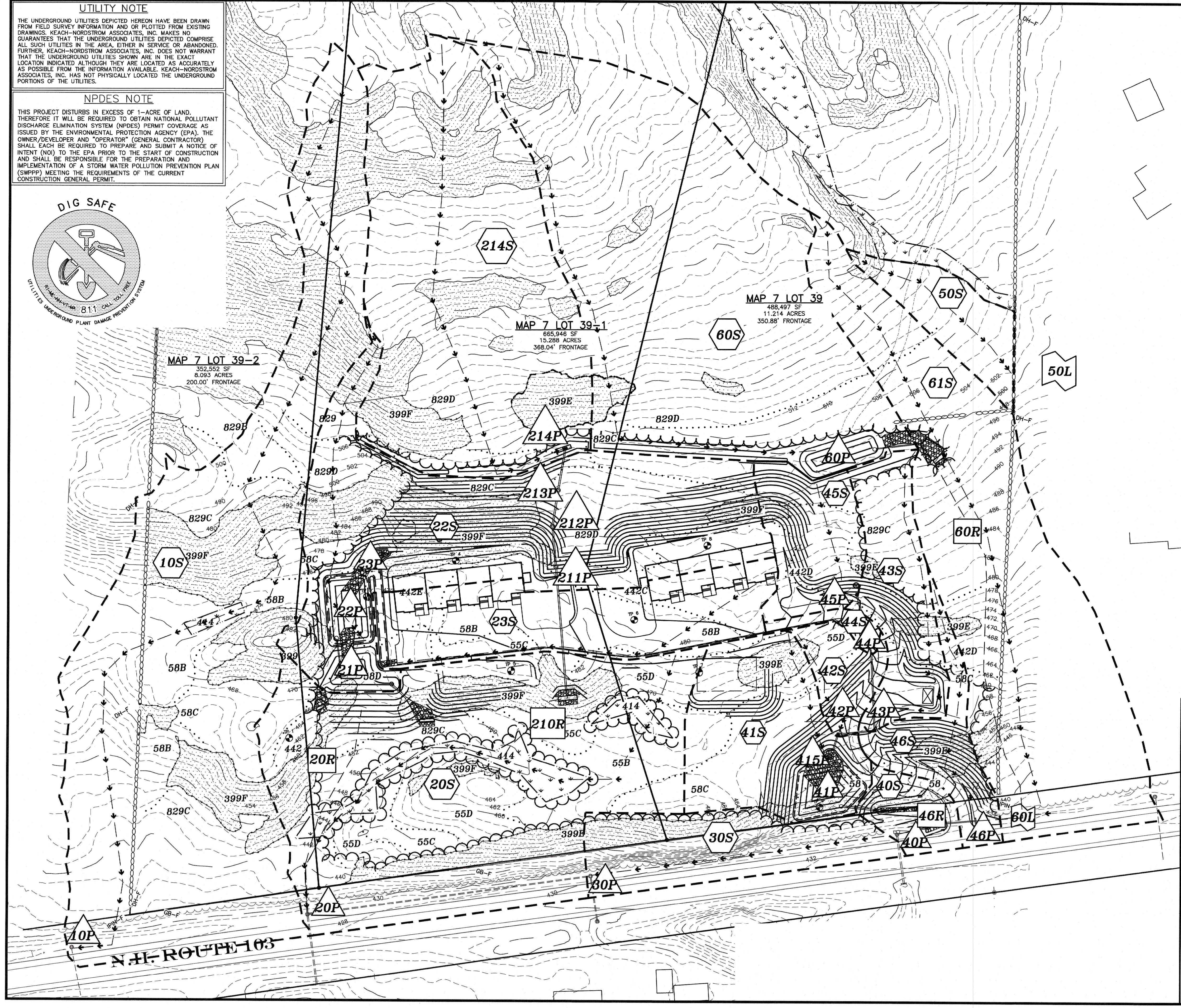
KEACH-NORDSTROM ASSOCIATES, INC.
Civil Engineering Land Surveying Landscape Architecture
10 Commerce Park North, Suite 3B, Bedford, NH 03110 Phone (603) 627-2881

REVISIONS

No.	DATE	DESCRIPTION	BY
1	5/22/25	PER PB AND AOT COMMENTS	AEW
2	9/4/25	PER AOT COMMENTS	AEW
3	10/31/25	PER AOT COMMENTS	AEW
4	10/31/25	PER ARIES & FIRE COMMENTS	JDJL
5	11/18/25	PER AOT & COND. OF APPROVAL	AEW
6	12/16/25	PER AOT COMMENTS	AEW

DATE: MARCH 25, 2025 **SCALE:** 1" = 50'

PROJECT NO: 24-0307-1 **SHEET** 2 **OF** 2

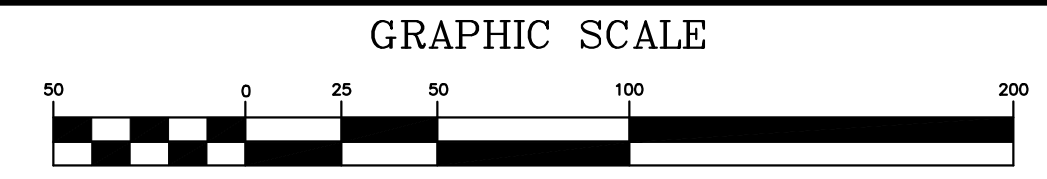
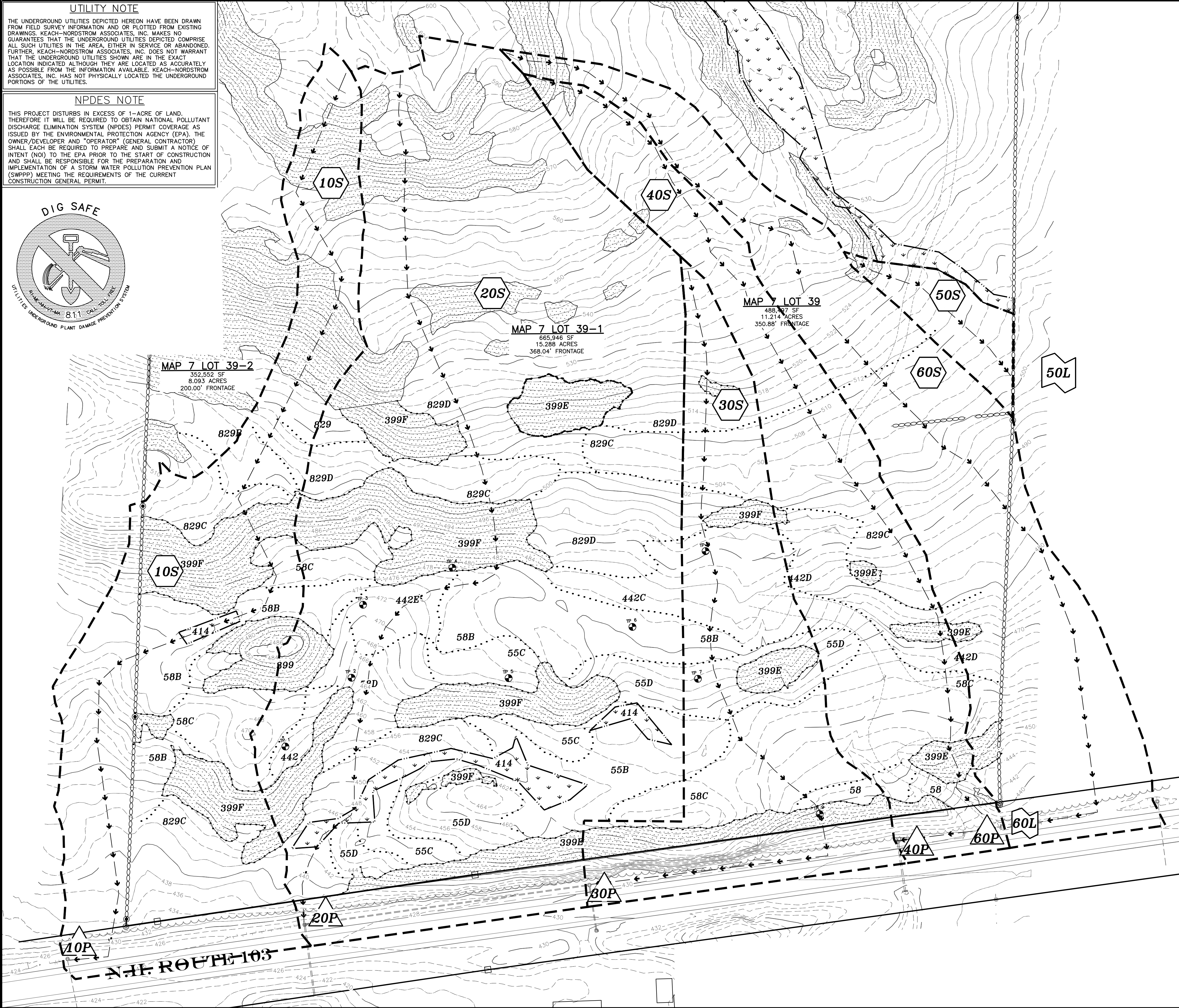


UTILITY NOTE

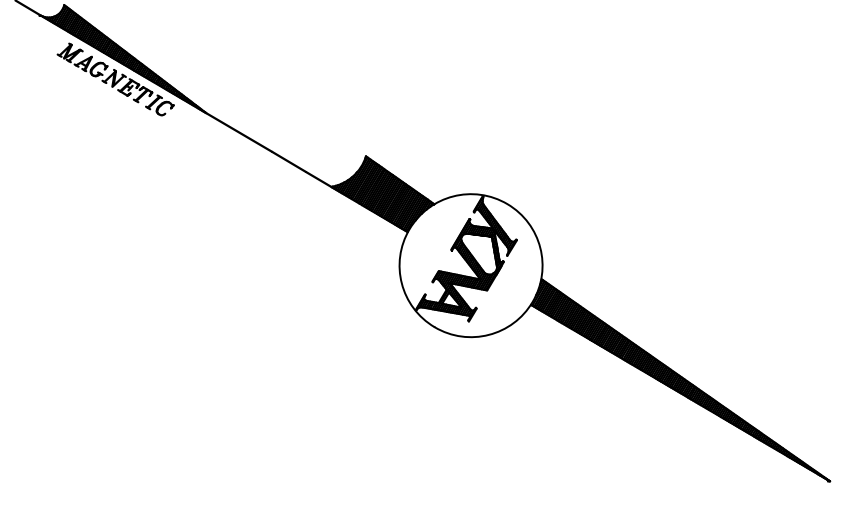
THE UNDERGROUND UTILITIES DEPICTED HEREON HAVE BEEN DRAWN FROM FIELD SURVEY INFORMATION AND/OR PLOTTED FROM EXISTING DRAWINGS. KEACH-NORDSTROM ASSOCIATES, INC. MAKES NO GUARANTEES THAT THE UNDERGROUND UTILITIES DEPICTED COMPRISE ALL SUCH UTILITIES IN THE AREA, EITHER IN SERVICE OR ABANDONED. FURTHER, KEACH-NORDSTROM ASSOCIATES, INC. DOES NOT WARRANT THAT THE UNDERGROUND UTILITIES SHOWN ARE IN THE EXACT LOCATION INDICATED ALTHOUGH THEY ARE LOCATED AS ACCURATELY AS POSSIBLE FROM THE INFORMATION AVAILABLE. KEACH-NORDSTROM ASSOCIATES, INC. HAS NOT PHYSICALLY LOCATED THE UNDERGROUND PORTIONS OF THE UTILITIES.

NPDES NOTE

THIS PROJECT DISTURBS IN EXCESS OF 1-ACRE OF LAND. THEREFORE IT WILL BE REQUIRED TO OBTAIN NATIONAL POLLUTANT DISCHARGE ELIMINATION SYSTEM (NPDES) PERMIT COVERAGE AS ISSUED BY THE ENVIRONMENTAL PROTECTION AGENCY (EPA). THE OWNER/DEVELOPER AND "OPERATOR" (GENERAL CONTRACTOR) SHALL EACH BE REQUIRED TO PREPARE AND SUBMIT A NOTICE OF INTENT (NOI) TO THE EPA PRIOR TO THE START OF CONSTRUCTION AND SHALL BE RESPONSIBLE FOR THE PREPARATION AND IMPLEMENTATION OF A STORM WATER POLLUTION PREVENTION PLAN (SWPPP) MEETING THE REQUIREMENTS OF THE CURRENT CONSTRUCTION GENERAL PERMIT.



- DRAINAGE LEGEND:**
- THE LEGEND BELOW REFLECTS THE HYDROCAD MODEL USED FOR DRAINAGE CALCULATIONS.
- SSSS SOIL LINES
 - 30B DENOTES SOIL TYPE
 - P DENOTES POND
 - S DENOTES SUBCATCHMENT AREA
 - R DENOTES REACH
 - L DENOTES POINT OF INTEREST
 - LIMIT OF SUBCATCHMENT AREA
 - - - - - TIME OF CONCENTRATION



SITE SPECIFIC SOIL MAP UNIT KEY

SYMBOL	MAP UNIT	HISS SYM	HSG
55	HERMON VERY STONY	121	B
442	CHICHESTER	221	B
58	WAUMBEC	321	A
829	WAUMBEC-HERMON ASSOCIATION	321	B
414	MOOSILAUKE POORLY DRAINED	521	C
399	LEDGE OUTCROP	228	D

THIS MAP PRODUCT IS WITHIN THE TECHNICAL STANDARDS OF THE NATIONAL COOPERATIVE SOIL SURVEY. IT IS A SPECIAL PURPOSE PRODUCT, INTENDED FOR INFILTRATION REQUIREMENTS BY THE NH DES ALTERATION OF TERRAIN BUREAU. IT WAS PRODUCED BY A PROFESSIONAL SOIL SCIENTIST, AND IS NOT A PRODUCT OF THE USDA NATURAL RESOURCES CONSERVATION SERVICE. THERE IS A REPORT THAT ACCOMPANIES THIS MAP.

THE SITE SPECIFIC SOIL SURVEY (SSSS) WAS PRODUCED NOVEMBER 23, 2024 AND WAS PREPARED BY LUKE HURLEY, CSS # 095, HURLEY ENVIRONMENTAL AND LAND PLANNING, LLC.. SOILS WERE IDENTIFIED WITH THE NEW HAMPSHIRE STATE-WIDE NUMERICAL SOILS LEGEND, USDA NRCS, DURHAM, NH. ISSUE # 10, JANUARY 2011. THE NUMERIC LEGEND WAS AMENDED TO IDENTIFY THE CORRECT SOIL COMPONENTS OF THE COMPLEX.

HYDROLOGIC SOIL GROUP FROM KSAT VALUES FOR NEW HAMPSHIRE SOILS, SOCIETY OF SOIL SCIENTISTS OF NEW ENGLAND, SPECIAL PUBLICATION NO. 5, SEPTEMBER, 2009.

PRE-DEVELOPMENT DRAINAREAS PLAN

JENNESSTOWN MANOR
MAP 7, LOTS 39 & 39-1
ROUTE 103
WARNER, NEW HAMPSHIRE
MERRIMACK COUNTY

OWNER/APPLICANT:
PEACOCK HILL ROAD, LLC
145 OLD TOWN ROAD
WEARE, NH 03281
BK. 3829 PG. 2512

KEACH-NORDSTROM ASSOCIATES, INC.
Civil Engineering Land Surveying Landscape Architecture
10 Commerce Park North, Suite 3B, Bedford, NH 03110 Phone (603) 627-2881

REVISIONS

No.	DATE	DESCRIPTION	BY
1	5/22/25	PER PB AND AOT COMMENTS	AEW
2	9/4/25	PER AOT COMMENTS	AEW
3	10/2/25	PER AOT COMMENTS	AEW
4	10/31/25	PER ARIES & FIRE COMMENTS	JDL
5	11/18/25	PER AOT & COND. OF APPROVAL	AEW
6	12/16/25	PER AOT COMMENTS	AEW

DATE: MARCH 25, 2025 **SCALE:** 1" = 50'

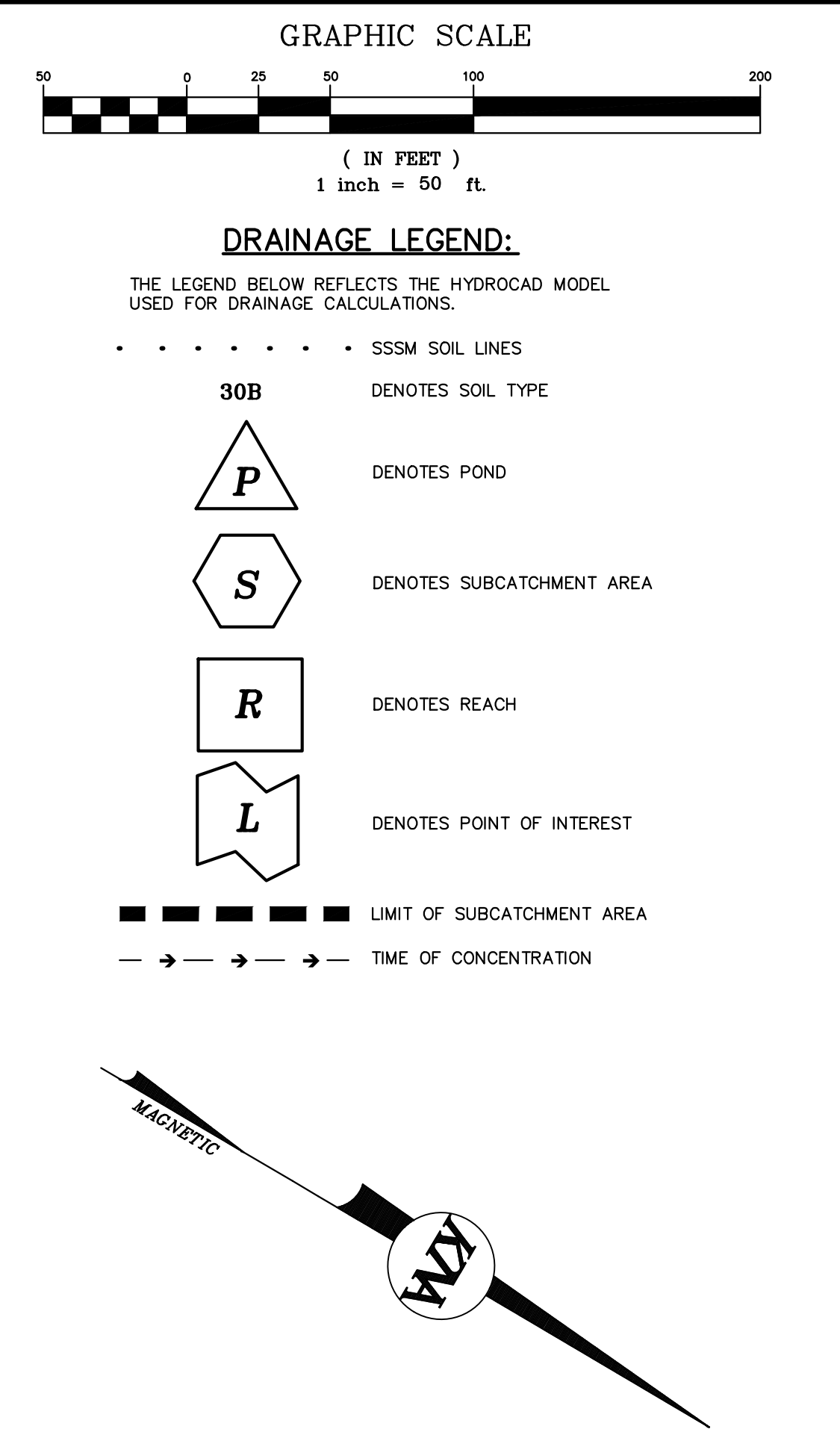
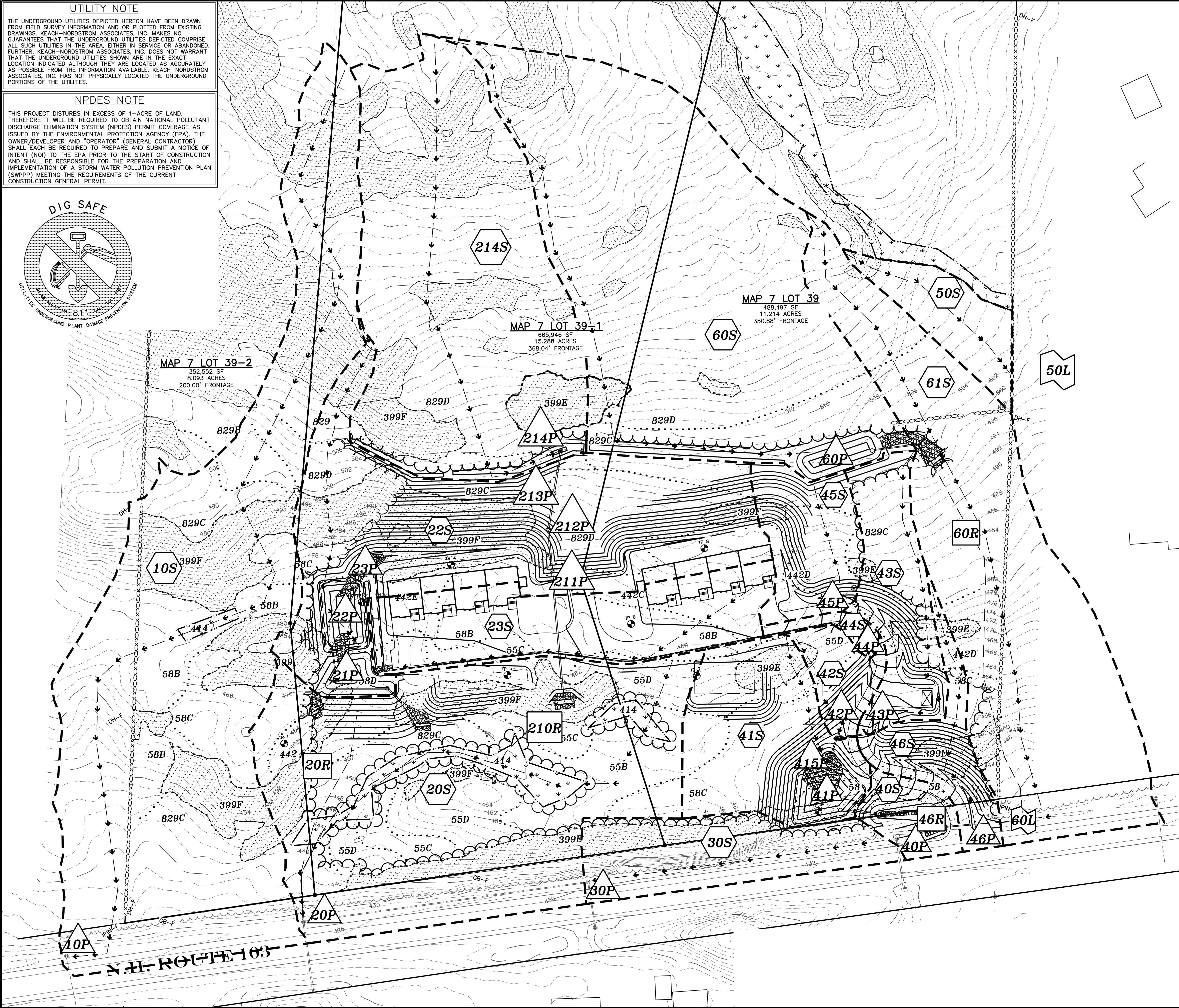
PROJECT NO: 24-0307-1 **SHEET** 1 **OF** 2

UTILITY NOTE

THE UNDERGROUND UTILITIES DEPICTED HEREON HAVE BEEN DRAWN FROM FIELD SURVEY INFORMATION AND OR PLOTTED FROM EXISTING DRAWINGS. KEACH-NORDSTROM ASSOCIATES, INC. MAKES NO GUARANTEES THAT THE UNDERGROUND UTILITIES DEPICTED COMPRISE ALL SUCH UTILITIES IN THE AREA, EITHER IN SERVICE OR ABANDONED. FURTHER, KEACH-NORDSTROM ASSOCIATES, INC. DOES NOT WARRANT THAT THE UNDERGROUND UTILITIES SHOWN ARE IN THE EXACT LOCATION INDICATED ALTHOUGH THEY ARE LOCATED AS ACCURATELY AS POSSIBLE FROM THE INFORMATION AVAILABLE. KEACH-NORDSTROM ASSOCIATES, INC. HAS NOT PHYSICALLY LOCATED THE UNDERGROUND PORTIONS OF THE UTILITIES.

NPDES NOTE

THIS PROJECT DISTURBS IN EXCESS OF 1-ACRE OF LAND. THEREFORE IT WILL BE REQUIRED TO OBTAIN NATIONAL POLLUTANT DISCHARGE ELIMINATION SYSTEM (NPDES) PERMIT COVERAGE AS ISSUED BY THE ENVIRONMENTAL PROTECTION AGENCY (EPA). THE OWNER/DEVELOPER AND "OPERATOR" (GENERAL CONTRACTOR) SHALL EACH BE REQUIRED TO PREPARE AND SUBMIT A NOTICE OF INTENT (NOI) TO THE EPA PRIOR TO THE START OF CONSTRUCTION AND SHALL BE RESPONSIBLE FOR THE PREPARATION AND IMPLEMENTATION OF A STORM WATER POLLUTION PREVENTION PLAN (SWPPP) MEETING THE REQUIREMENTS OF THE CURRENT CONSTRUCTION GENERAL PERMIT.



SITE SPECIFIC SOIL MAP UNIT KEY			
SYMBOL	MAP UNIT	HISS SYM	HSG
55	HERMON VERY STONY	121	B
442	CHICHESTER	221	B
58	WAUMBEC	321	A
829	WAUMBEC-HERMON ASSOCIATION	321	B
414	MOOSILAUKE POORLY DRAINED	521	C
399	LEDGE OUTCROP	228	D

THIS MAP PRODUCT IS WITHIN THE TECHNICAL STANDARDS OF THE NATIONAL COOPERATIVE SOIL SURVEY. IT IS A SPECIAL PURPOSE PRODUCT, INTENDED FOR INFILTRATION REQUIREMENTS BY THE NH DES ALTERATION OF TERRAIN BUREAU. IT WAS PRODUCED BY A PROFESSIONAL SOIL SCIENTIST, AND IS NOT A PRODUCT OF THE USDA NATURAL RESOURCES CONSERVATION SERVICE. THERE IS A REPORT THAT ACCOMPANIES THIS MAP.

THE SITE SPECIFIC SOIL SURVEY (SSSS) WAS PRODUCED NOVEMBER 23, 2024 AND WAS PREPARED BY LUKE HURLEY, CSS # 095, HURLEY ENVIRONMENTAL AND LAND PLANNING, LLC.. SOILS WERE IDENTIFIED WITH THE NEW HAMPSHIRE STATE-WIDE NUMERICAL SOILS LEGEND, USDA NRCS, DURHAM, NH, ISSUE # 10, JANUARY 2011. THE NUMERIC LEGEND WAS AMENDED TO IDENTIFY THE CORRECT SOIL COMPONENTS OF THE COMPLEX.

HYDROLOGIC SOIL GROUP FROM KSAT VALUES FOR NEW HAMPSHIRE SOILS, SOCIETY OF SOIL SCIENTISTS OF NEW ENGLAND, SPECIAL PUBLICATION NO. 5, SEPTEMBER, 2009.

POST-DEVELOPMENT DRAINAREAS PLAN			
JENNESSTOWN MANOR MAP 7, LOTS 39 & 39-1 ROUTE 103 WARNER, NEW HAMPSHIRE MERRIMACK COUNTY			
OWNER/APPLICANT: PEACOCK HILL ROAD, LLC 145 OLD TOWN ROAD WEARE, NH 03281 BK. 3829 PG. 2512			
KEACH-NORDSTROM ASSOCIATES, INC. Civil Engineering Land Surveying Landscape Architecture 10 Commerce Park North, Suite 3B, Bedford, NH 03110 Phone (603) 627-2881			
REVISIONS			
No.	DATE	DESCRIPTION	BY
1	5/22/25	PER PB AND AOT COMMENTS	AEW
2	9/4/25	PER AOT COMMENTS	AEW
3	10/2/25	PER AOT COMMENTS	AEW
4	10/31/25	PER ARIES & FIRE COMMENTS	JDL
5	11/18/25	PER AOT & COND. OF APPROVAL	AEW
6	12/16/25	PER AOT COMMENTS	AEW
DATE: MARCH 25, 2025		SCALE: 1" = 50'	
PROJECT NO: 24-0307-1		SHEET 2 OF 2	